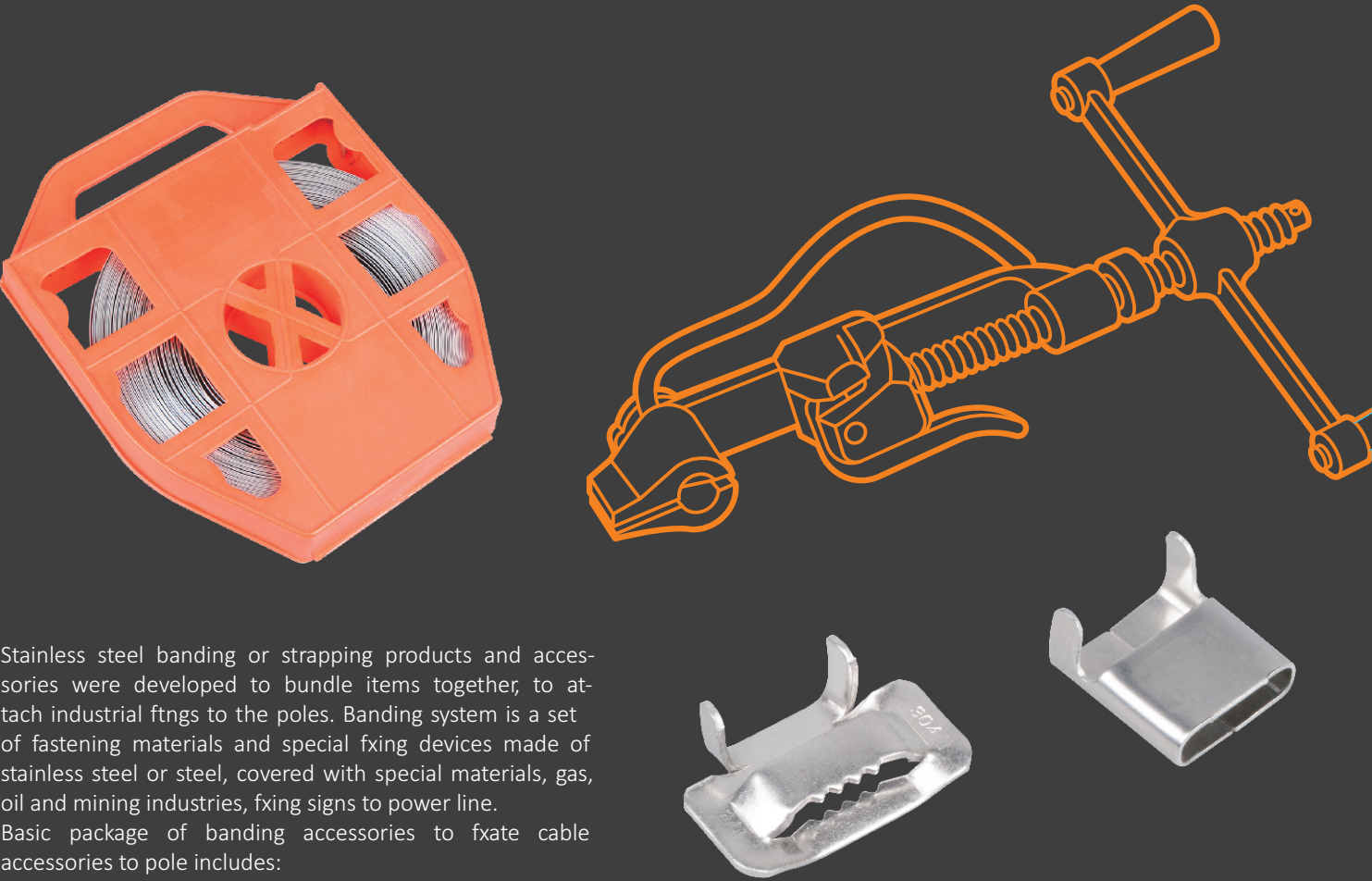




Passion from technology
Bring you a safty electricity

STAINLESS STEEL BAND STAINLESS STEEL BUCKLES STAINLESS STEEL TOOLS



Stainless steel banding or strapping products and acces-
sories were developed to bundle items together, to at-
tach industrial ftngs to the poles. Banding system is a set
of fastening materials and special fxing devices made of
stainless steel or steel, covered with special materials, gas,
oil and mining industries, fxing signs to power line.
Basic package of banding accessories to fxate cable
accessories to pole includes:

- stainless steel band;
- stainless steel buckles;
- tools for tghtening band.

CROP CHINA
www.cropgroupcn.com
www.cropgroup.cn



STAINLESS STEEL BANDS & BUCKLE

STAINLESS STEEL BANDS & BUCKLE



ST SERIES STAINLESS STEEL BAND

Product informaton

Stainless steel band applied with suspension
clamps, anchor clamps, and hooks, on dead end
and intermediate routes, of main or end use
electrical connectons.

Stainless steel bands are made of stainless
steel of diferent grades: 201, 202, 304, 316,
409. Teletronik's band have superior elongaton
value, compared to other manufactors. For easy
indetfcaton of steel grade, we prod-ucts the
plastic boxes form diferent colors.

Steel strapping is the strongest way of securing
with heavy loads, when fxing items withhold the
high tensile strength.

Teletronik's banding products are available in
diferent sizes to assist your strapping needs.
Stainless steel bands can guarantee extended
service life and atatching under signifcant
mechanical loads.

Installaton process:

1. Cut the stainless steel strap with needed length
by strap banding tool.
2. Put on it the stainless steel buckle.
3. Fix the strap by moving the strap banding tool
wheel (or ratchet), then cut the band.

Technical specification:

Material grade, SUS	201,202,304,316,409	201,202,304,316,409	201,202,304,316,409	201,202,304,316,409	201,202,304,316,409
Width	1/4" – 6.4 mm	3/8" – 9.5 mm	1/2" – 12.7 mm	5/8" – 16.0 mm	3/4" – 19.0 mm
Thikness	0.015" – 0.40 mm	0.020" – 0.50 mm	0.025" – 0.64 mm	0.028" – 0.70 mm	0.030" – 0.75 mm
Length for roll, m	30 or 50	30 or 50	30 or 50	30 or 50	30 or 50
Colour of dispenser	Red or Blue	Red or Blue	Red or Blue	Red or Blue	Red or Blue

* The other colour of dispenser can be customized.



STE-Y SERIES

Product informaton

Stainless steel buckles, other called stain-less
steel clips, used to atatch pole ftngs, anchor
clamps, suspension fittings and other fittings or
accessories together with stainless steel band, on
dead-end and inter-mediate routes, of main or
end use electrical connectons.

Stainless steel buckles Y-type are made of stainless
steel of diferent grades: 201, 202, 304,316.

Stainless steel buckles Y-type are reinforced, this
can guarantee extended service life and atatching
under signifcant mechanical loads because teeth
strictly clamped the band inside.

Stainless steel buckles Y-type are made of different
sizes depend on band strapping size to assist your
strapping needs of securing with heavy loads.
Stainless steel buckles has max size for band- 20
mm and appropriate for inserton of three coils of
band strapping.

The design of buckles exclude purchase bolts, nuts
and washers, hex keys of diferent sizes.

Technical specification:

Product code	STE-Y10	STE-Y12.7	STE-Y16	STE-Y20
Max band width	3/8" – 10 mm	1/2" – 12.7 mm	5/8" – 16.0 mm	3/4" – 20.0 mm
Grades	201, 202, 304, 316	201, 202, 304, 316	201, 202, 304, 316	201, 202, 304, 316



STE-L SERIES STAINLESS STEEL BUCKLES

Product informaton

Stainless steel buckles, other called stain-less steel clips, used to attach pole fittings, anchor clamps, suspension fittings and other fittings or accessories together with stainless steel band on dead-end and inter-mediate routes, of main or end use electrical connectons.

Stainless steel buckles L-type are made of stainless steel of different grades: 201, 202, 304, 316.

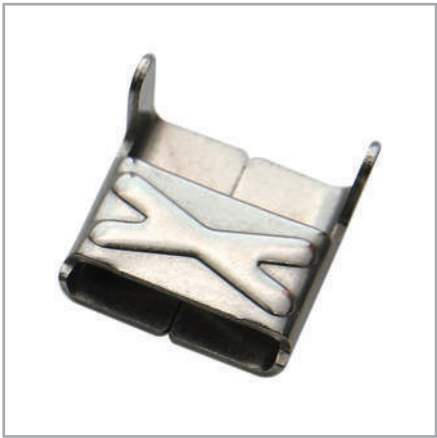
Stainless steel buckles L-type are made of diferent sizes depend on band strap-ping size to assist your

strapping needs of securing with heavy loads. Stainless steel buckles have max size for band- 20 mm and appropriate for insertion of three coils of band strapping.

The design of buckles exclude purchase bolts, nuts and washers, hex keys of difer-ent sizes.

Technical specification:

Product code	STE-L10	STE-L12.7	STE-16	STE-L20
Max band width	3/8" – 10 mm	1/2" – 12.7 mm	5/8" – 16.0 mm	3/4" – 20.0 mm
Grades	201, 202, 304, 316	201, 202, 304, 316	201, 202, 304, 316	201, 202, 304, 316



STE-LX SERIES STAINLESS STEEL BUCKLES

Product informaton

Stainless steel buckles, other called stain-less steel clips, used to attach pole fittings, anchor clamps, suspension fittings and other fittings or accessories together with stainless steel band, on dead-end and inter-mediate routes, of main or end use electrical connectons.

Stainless steel buckles LX are made of stainless steel of diferent grades: 201, 202, 304, 316. Stainless steel buckles LX are made as analog to reinforced buckles, to withhold sufci-ent mechanical loads, compared to sim-ple L-type.

Stainless steel buckles have max size for band- 20 mm and appropriate for inserton of three coils of band strapping.

The design of buckles exclude purchase bolts, nuts and washers, hex keys of different sizes.

Technical specification:

Product code	STE-LX10	SET-LX20
Max band width	3/8" – 10 mm	3/4" – 20.0 mm
Grades	201, 202, 304, 316	201, 202, 304, 316



RATCHET TOOL STTB

Product informaton

Ratchet type tool STTB is developed for tensioning the stainless steel band and mountng the ftngs on wooden, concrete or metal poles. The tool is equipped with special blade for easily cutng the stainless steel band.

Ratchet tool STTB heavy duty forged steel banding tool. Maximum thickness of mounted steel band is 1.5 mm and 25 mm of width.

Ratchet tool STTB is made of galva-nized steel, which is resistant to impacts and wear

Has long durability and extended service life. Ratchet tool STTB is an easy way of binding stainless steel banding around diferent rack/ pole elements. It keeps the tension tght on the strapping bands as they fasten the components together

The oper-atons of cutng, tension, banding can be done with spin tension handle, spring-load-ed gripper and cutter. To complete the installaton there is only one tool needed.

Technical specification:

Product code	STTB
Max band width	< 25
Grades	< 1.2



WHEEL TOOL STTA

Product informaton

Wheel type tool STTA is developed for tensioning the stainless steel band and mountng the ftngs on wooden, concrete or metal poles. The tool is equipped with special blade for easily cutng the stainless steel band.

Wheel type tool STTA is heavy duty forged steel banding tool. Maximum thick-ness of mounted steel band is 1.2 mm and 20 mm of width. Wheel type tool STTAis made of gal-vanized steel, which is resistant to impacts and wear Have long durability and extended service life.

The strapping tool STTA has superi-or rust corrosion resistance and trouble proofed design, which strictly clamped the band and buckles.

The cut knife withholds plenty of cutng cycles and guarantee long service period of tool. To complete the installaton there is only one tool needed.

Technical specification:

Product code	STTA1(normal)	STTA2 (heavy duty)
Max band width	< 20	< 20
Grades	< 1.2	< 1.2