

Insulator Ties

Insulator Distribution Tie(DB)

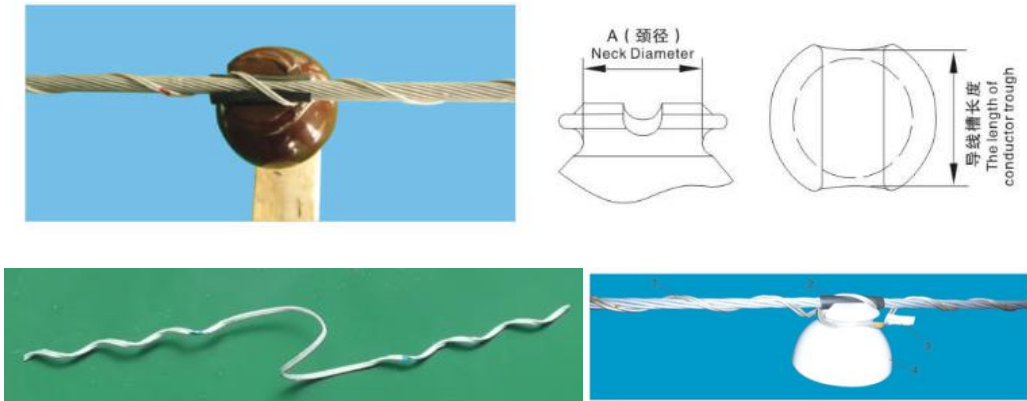


Fig Insulator Distribution Tie

1. Helical armor rod: Fixing wire , ground wire.
2. Sleeve: protective conductor and ground wire, cover the sleeve on the wire at first during installation
3. Identification tape: marked with product number,nominal size.
4. Color code: for distinguishing the range of applicable wire diameter.

Selection table

1. Helical insulator distribution tie, suitable for bare conductor and insulated wire used cooperatively with P-6 pin insulators(neck diameter 66mm)

Table C01-1selection table

Product model of the Company	Applicable diameter of guide wire (mm)		Product parameters		Applicable international wire		
			Color code	Number in each group	LJ	Ordinary insulation 10KV	Thinner insulation 10KV
DB-0600	4.83	5.46	Blue	2	16		10
DB-0601	5.47	6.20	Brown	2			16
DB-0602	6.21	7.04	Orange	2	25		
DB-0603	7.05	8.00	Purple	2	35		
DB-0604	8.01	9.07	Red	2	50		
DB-0605	9.08	10.29	Yellow	2			
DB-0606	10.3	11.66	Blue	2	70		
DB-0607	11.67	13.21	Orange	2	95	10, 16	
DB-0608	13.22	14.94	Red	2	120		25
DB-0609	14.95	16.89	Purple	2	150	25, 35	35, 50
DB-0610	16.9	19.18	Brown	2	185, 210	50	70
DB-0611	19.2	21.79	Red	2	240	70, 95	95, 120
DB-0612	21.82	24.59	Blue	2	300	120, 150	150, 185
DB-0613	24.61	27.84	Green	2	400	185	240
DB-0614	27.85	31.50	Yellow	2			

Note: For right-hand lay bare wires and insulated wires

2. Helical insulator distribution tie, suitable for bare conductor and insulated wire used cooperatively with P-10 pin insulators(neck diameter 74mm)

Table C01-2 selection table

Product model of the Company	Applicable diameter of guide wire (mm)		Product parameters		Applicable international wire		
			Color code	Number in each group	LJ	Ordinary insulation 10KV	Thinner insulation 10KV
DB-1000	4.83	5.46	Blue	2	16		10
DB-1001	5.47	6.20	Brown	2			16
DB-1002	6.21	7.04	Orange	2	25		
DB-1003	7.05	8.00	Purple	2	35		
DB-1004	8.01	9.07	Red	2	50		
DB-1005	9.08	10.29	Yellow	2			
DB-1006	10.3	11.66	Blue	2	70		
DB-1007	11.67	13.21	Orange	2	95	10, 16	
DB-1008	13.22	14.94	Red	2	120		25
DB-1009	14.95	16.89	Purple	2	150	25, 35	35, 50
DB-1010	16.9	19.18	Brown	2	185, 210	50	70
DB-1011	19.2	21.79	Red	2	240	70, 95	95, 120
DB-1012	21.82	24.59	Blue	2	300	120, 150	150, 185
DB-1013	24.61	27.84	Green	2	400	185	240
DB-1014	27.85	31.50	Yellow	2			

Note: For right-hand lay bare wires and insulated wires

3. Helical insulator distribution tie, suitable for bare conductor and insulated wire used cooperatively with P-15 pin insulators(neck diameter 80mm)

Table C01-3 selection table

Product model of the Company	Applicable diameter of guide wire (mm)		Product parameters		Applicable international wire		
			Color code	Number in each group	LJ	Ordinary insulation 10KV	Thinner insulation 10KV
DB-1500	4.83	5.46	Blue	2	16		10
DB-1501	5.47	6.20	Brown	2			16
DB-1502	6.21	7.04	Orange	2	25		
DB-1503	7.05	8.00	Purple	2	35		
DB-1504	8.01	9.07	Red	2	50		
DB-1505	9.08	10.29	Yellow	2			
DB-1506	10.3	11.66	Blue	2	70		
DB-1507	11.67	13.21	Orange	2	95	10, 16	
DB-1508	13.22	14.94	Red	2	120		25
DB-1509	14.95	16.89	Purple	2	150	25, 35	35, 50
DB-1510	16.9	19.18	Brown	2	185, 210	50	70
DB-1511	19.2	21.79	Red	2	240	70, 95	95, 120
DB-1512	21.82	24.59	Blue	2	300	120, 150	150, 185
DB-1513	24.61	27.84	Green	2	400	185	240
DB-1514	27.85	31.50	Yellow	2			

Note: For right-hand lay bare wires and insulated wires

Helical Insulator Side Ties (CB)



Fig Insulator side tie

Selection Table

1. Helical insulator side tie, suitable for bare conductor and insulated wire used cooperatively with P-6 pin insulators(neck diameter 66mm)

Table C01-4 selection table

Product model of the Company	Applicable diameter of guide wire (mm)		Product parameters		Applicable international wire		
			Color code	Number in each group	LJ	Ordinary insulation 10KV	Thinner insulation 10KV
CB-0600	4.83	5.46	Blue	3	16		10
CB-0601	5.47	6.20	Brown	3			16
CB-0602	6.21	7.04	Orange	3	25		
CB-0603	7.05	8.00	Purple	3	35		
CB-0604	8.01	9.07	Red	3	50		
CB-0605	9.08	10.29	Yellow	3			
CB-0606	10.3	11.66	Blue	3	70		
CB-0607	11.67	13.21	Orange	3	95	10, 16	
CB-0608	13.22	14.94	Red	3	120		25
CB-0609	14.95	16.89	Purple	3	150	25, 35	35, 50
CB-0610	16.9	19.18	Brown	3	185, 210	50	70
CB-0611	19.2	21.79	Red	3	240	70, 95	95, 120
CB-0612	21.82	24.59	Blue	4	300	120, 150	150, 185
CB-0613	24.61	27.84	Green	4	400	185	240
CB-0614	27.85	31.50	Yellow	4			

Note: For right-hand lay bare wires and insulated wires

2. Helical insulator side tie, suitable for bare conductor and insulated wire used cooperatively with P-10 pin insulators(neck diameter 74mm)

Table C01-5 selection table

Product model of the Company	Applicable diameter of guide wire (mm)		Product parameters		Applicable international wire		
			Color code	Number in each group	LJ	Ordinary insulation 10KV	Thinner insulation 10KV
CB-1000	4.83	5.46	Blue	3	16		10
CB-1001	5.47	6.20	Brown	3			16
CB-1002	6.21	7.04	Orange	3	25		
CB-1003	7.05	8.00	Purple	3	35		
CB-1004	8.01	9.07	Red	3	50		
CB-1005	9.08	10.29	Yellow	3			
CB-1006	10.3	11.66	Blue	3	70		
CB-1007	11.67	13.21	Orange	3	95	10, 16	
CB-1008	13.22	14.94	Red	3	120		25
CB-1009	14.95	16.89	Purple	3	150	25, 35	35, 50
CB-1010	16.9	19.18	Brown	3	185, 210	50	70
CB-1011	19.2	21.79	Red	3	240	70, 95	95, 120
CB-1012	21.82	24.59	Blue	4	300	120, 150	150, 185
CB-1013	24.61	27.84	Green	4	400	185	240
CB-1014	27.85	31.50	Yellow	4			

Note: For right-hand lay bare wires and insulated wires

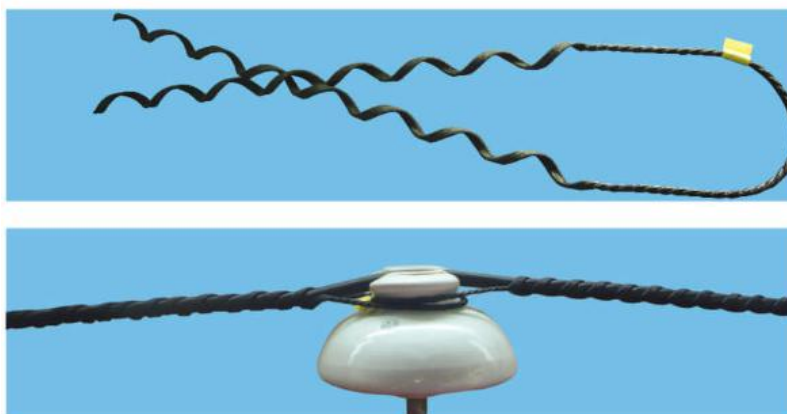
3. Helical insulator side tie, suitable for bare conductor and insulated wire used cooperatively with P-15 pin insulators(neck diameter 80mm)

Table C01-6 selection table

Product model of the Company	Applicable diameter of guide wire (mm)		Product parameters		Applicable international wire		
			Color code	Number in each group	LJ	Ordinary insulation 10KV	Thinner insulation 10KV
CB-1500	4.83	5.46	Blue	3	16		10
CB-1501	5.47	6.20	Brown	3			16
CB-1502	6.21	7.04	Orange	3	25		
CB-1503	7.05	8.00	Purple	3	35		
CB-1504	8.01	9.07	Red	3	50		
CB-1505	9.08	10.29	Yellow	3			
CB-1506	10.3	11.66	Blue	3	70		
CB-1507	11.67	13.21	Orange	3	95	10, 16	
CB-1508	13.22	14.94	Red	3	120		25
CB-1509	14.95	16.89	Purple	3	150	25, 35	35, 50
CB-1510	16.9	19.18	Brown	3	185, 210	50	70
CB-1511	19.2	21.79	Red	3	240	70, 95	95, 120
CB-1512	21.82	24.59	Blue	4	300	120, 150	150, 185
CB-1513	24.61	27.84	Green	4	400	185	240
CB-1514	27.85	31.50	Yellow	4			

Note: For right-hand lay bare wires and insulated wires

Double Tie



PVC insulated Plastic Tie

Single top insulator tie



Double top insulator tie



Single side insulator tie



For detail specification of PVC Tie and Plastic Tie, please see catalogue Plastic Tie of CROP.